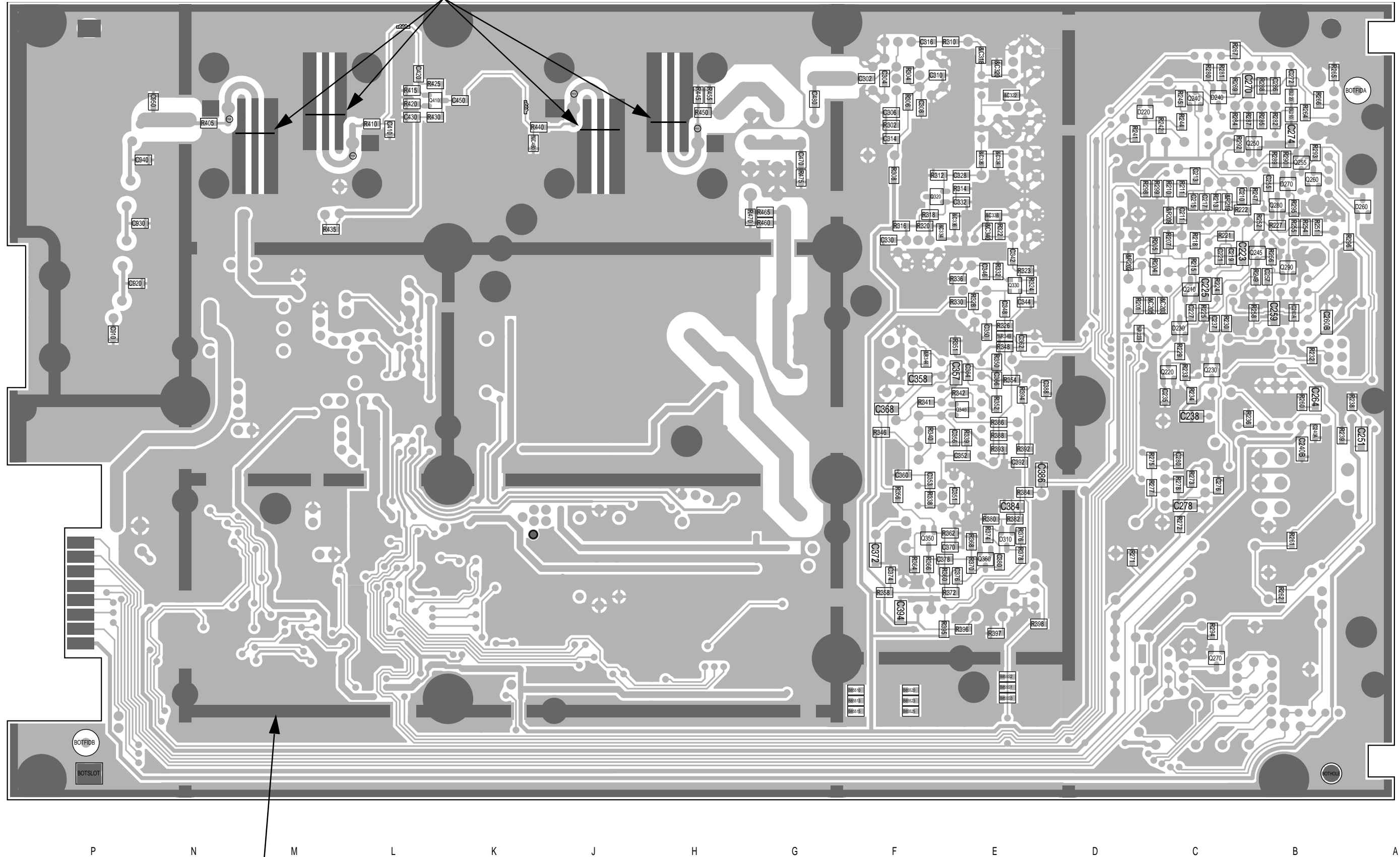


The darker shading shows the outline of the chassis.

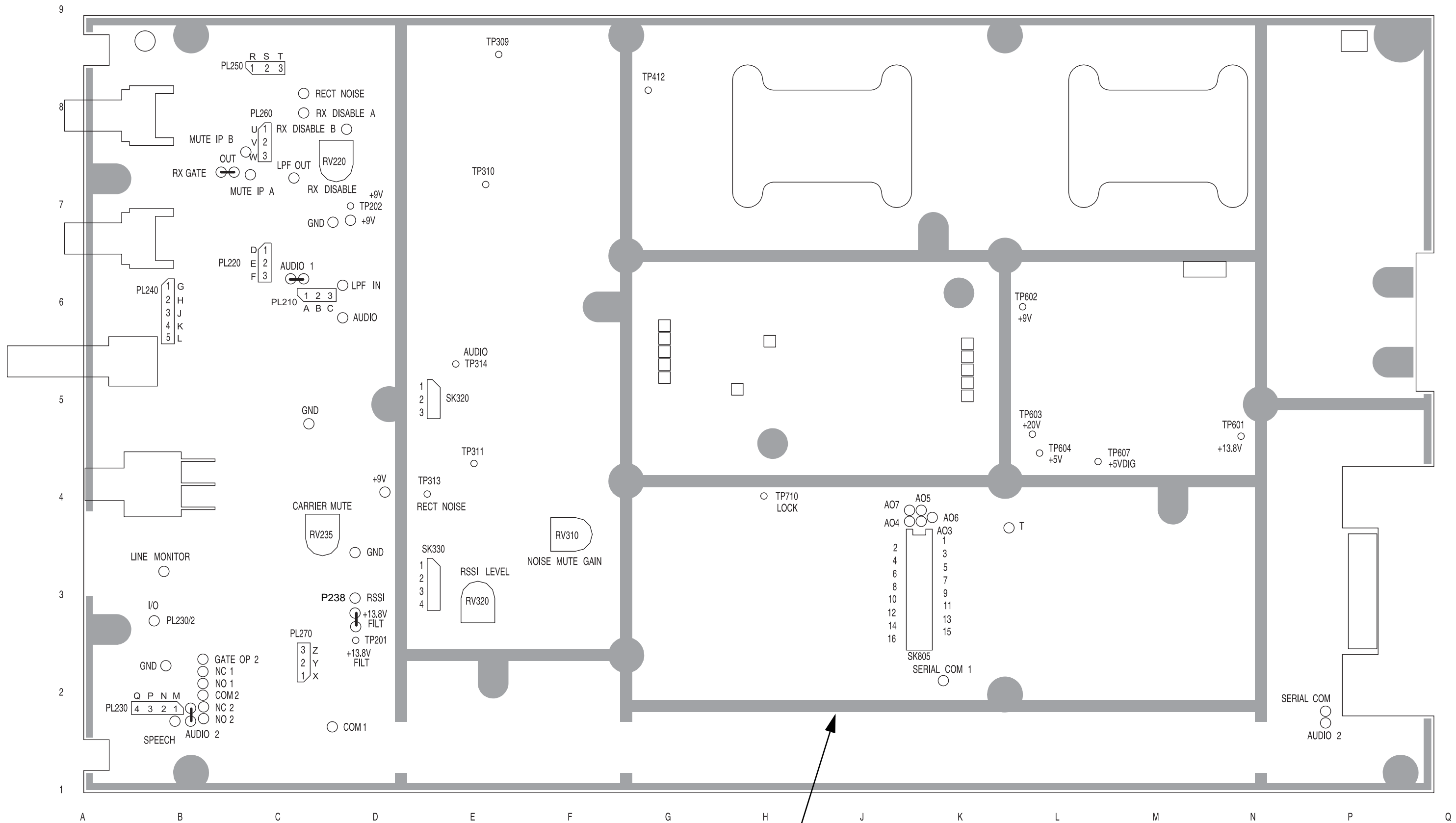
T855 PCB Layout - Top Side
220-01396-02

These link wires are positioned according to frequency range and should not be moved as their position is optimised in the factory.

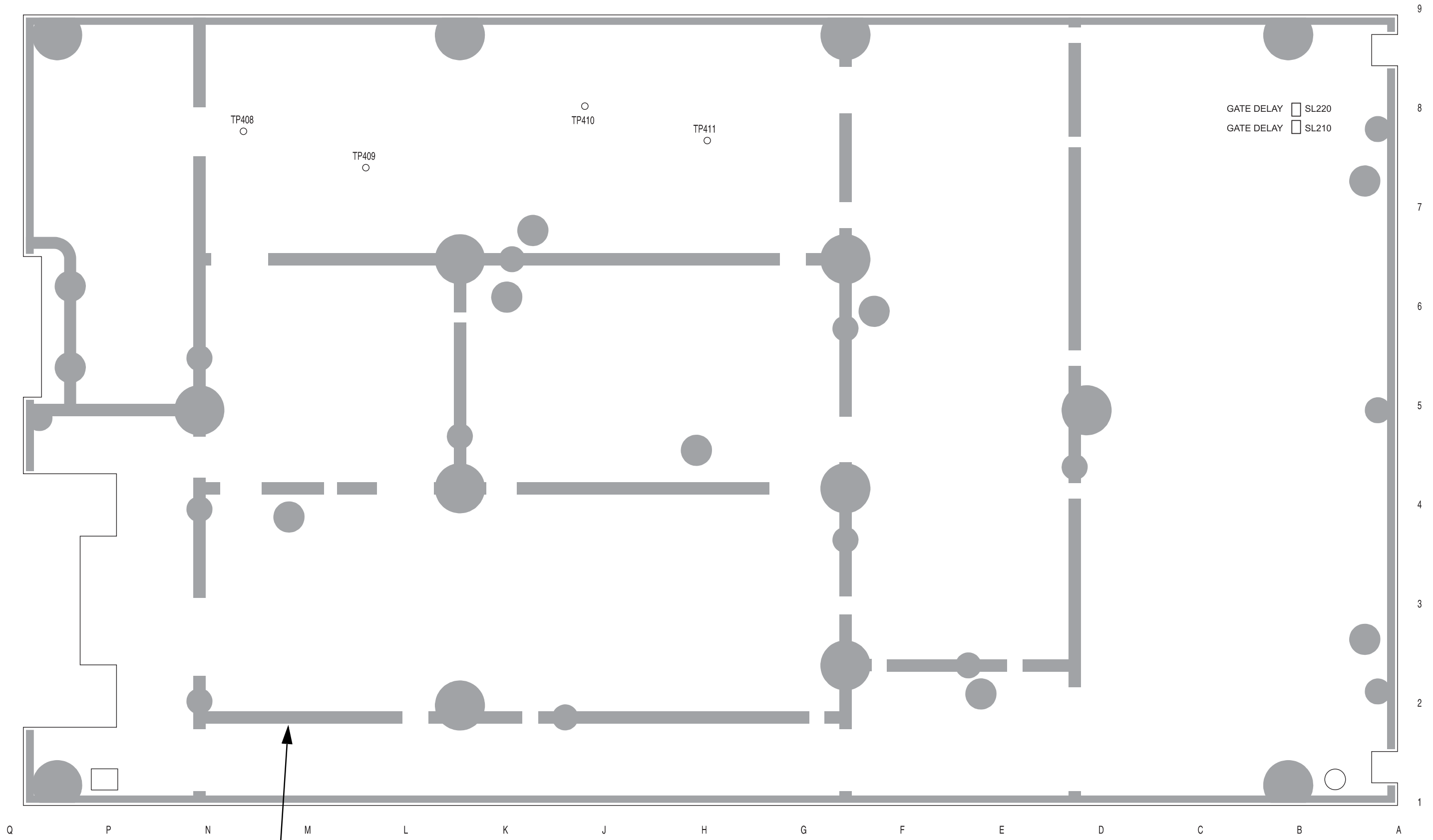


The darker shading shows the footprint of the bottom cover.

T855 PCB Layout - Bottom Side
 220-01396-02

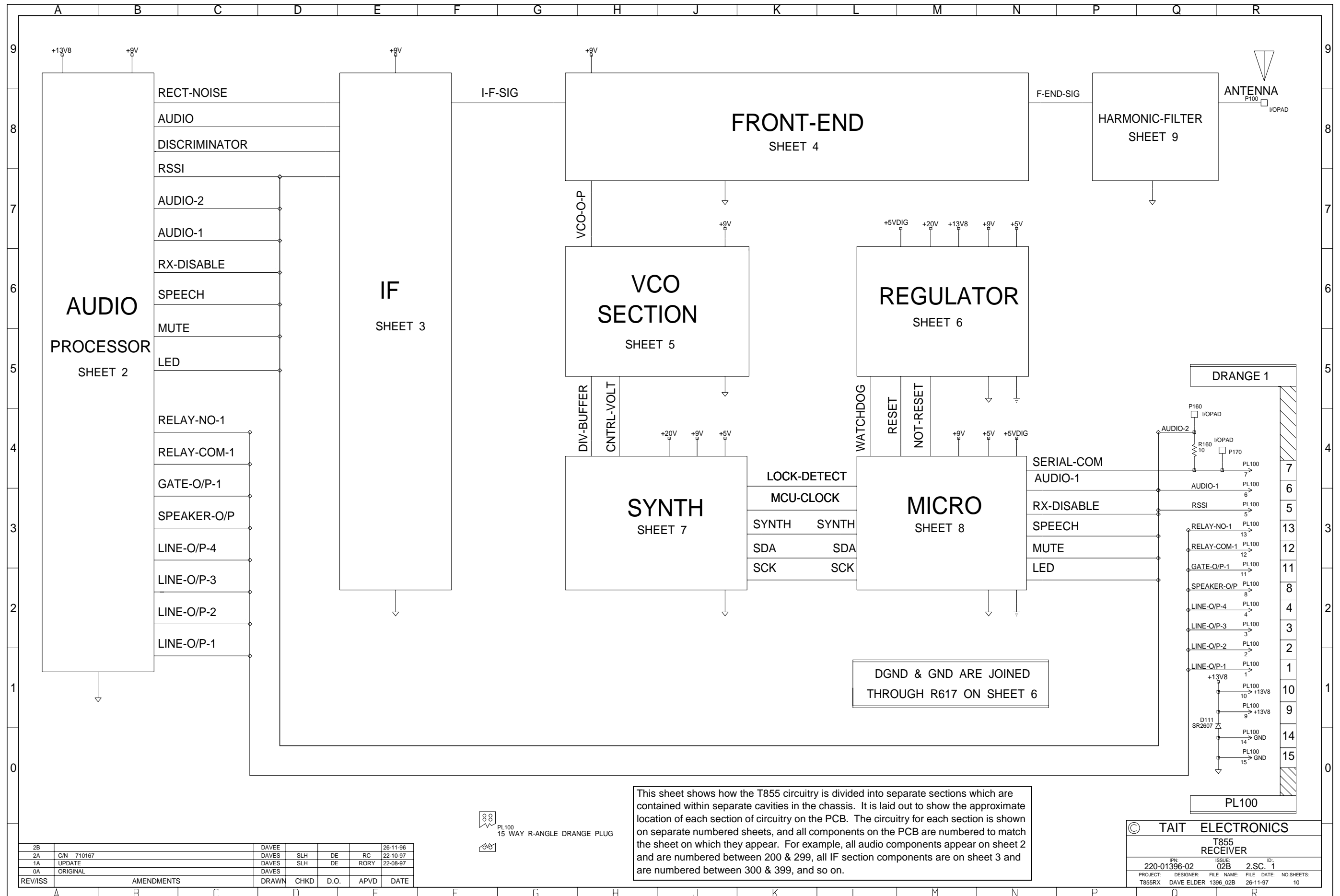


The darker shading shows the outline of the chassis.



The darker shading shows the footprint of the bottom cover.

T855 Test Points & Options Connections - Bottom Side
220-01396-02

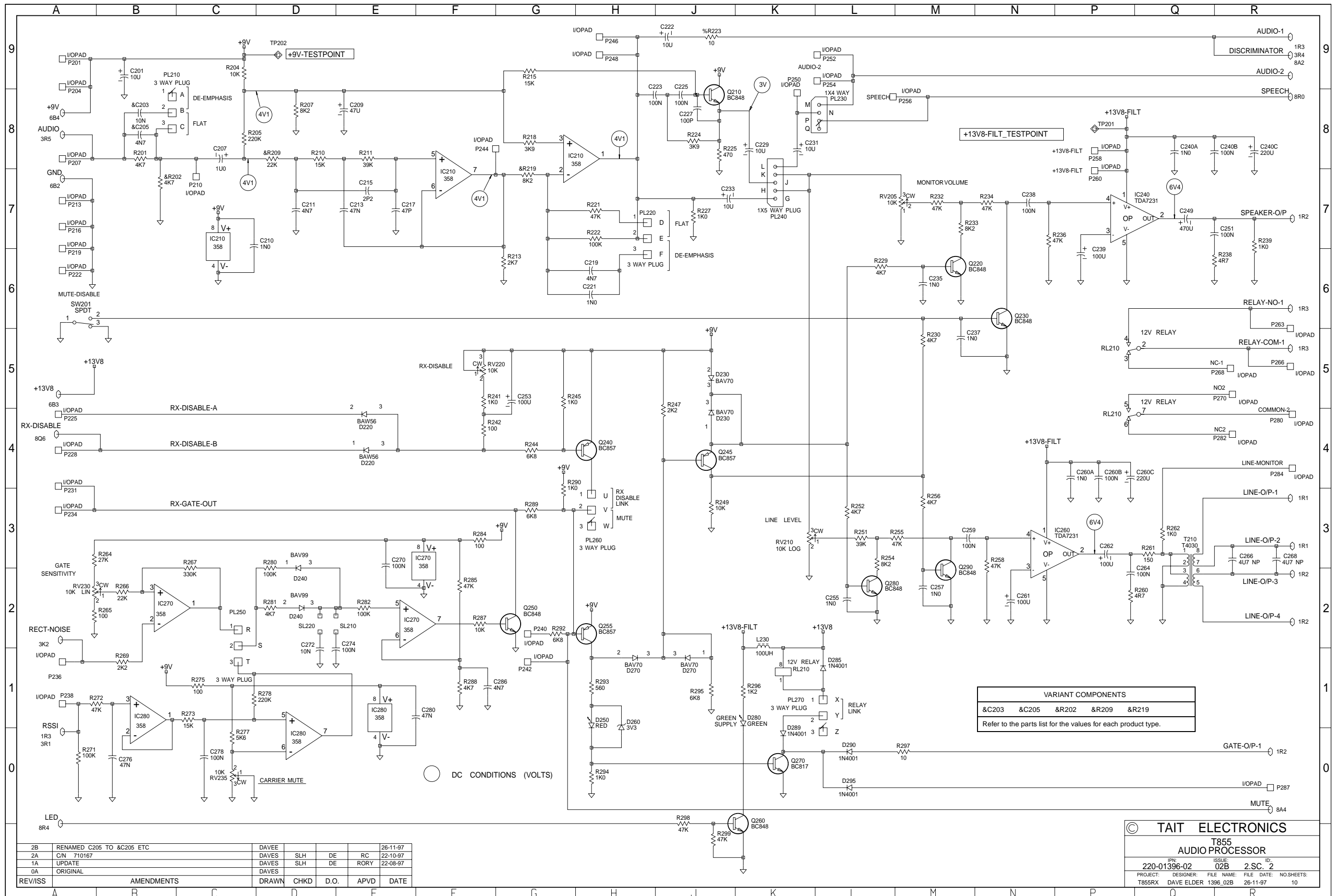


2B		DAVEE			26-11-96
2A	C/N 710167	DAVES	SLH	DE RC	22-10-97
1A	UPDATE	DAVES	SLH	DE RORY	22-08-97
0A	ORIGINAL	DAVES			
REV/ISS	AMENDMENTS	DRAWN	CHKD	D.O.	APVD DATE

PL100
15 WAY R-ANGLE DRANGE PLUG

This sheet shows how the T855 circuitry is divided into separate sections which are contained within separate cavities in the chassis. It is laid out to show the approximate location of each section of circuitry on the PCB. The circuitry for each section is shown on separate numbered sheets, and all components on the PCB are numbered to match the sheet on which they appear. For example, all audio components appear on sheet 2 and are numbered between 200 & 299, all IF section components are on sheet 3 and are numbered between 300 & 399, and so on.

© TAIT ELECTRONICS			
T855 RECEIVER			
IPN:	ISSUE:	FILE NAME:	NO. SHEETS:
220-01396-02	02B	1396_02B	10
PROJECT:	DESIGNER:	FILE DATE:	
T855RX	DAVE ELDER	20-11-97	

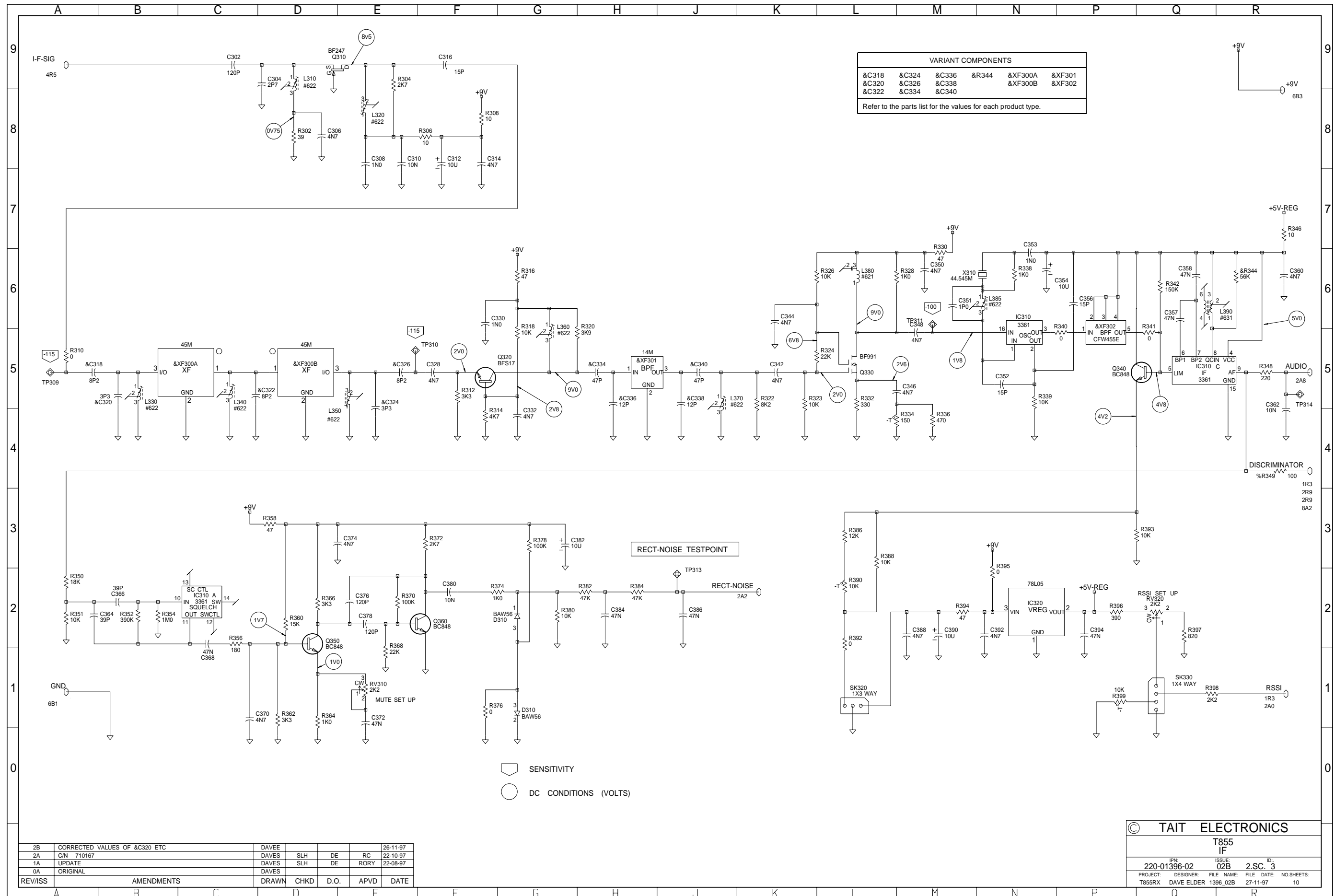


TAIT ELECTRONICS

T855
AUDIO PROCESSOR

IPN: 220-01396-02 ISSUE: 02B ID: 2.S.C. 2

PROJECT: T855RX DESIGNER: DAVE ELDER FILE NAME: 1396_02B FILE DATE: 26-11-97 NO.SHEETS: 10

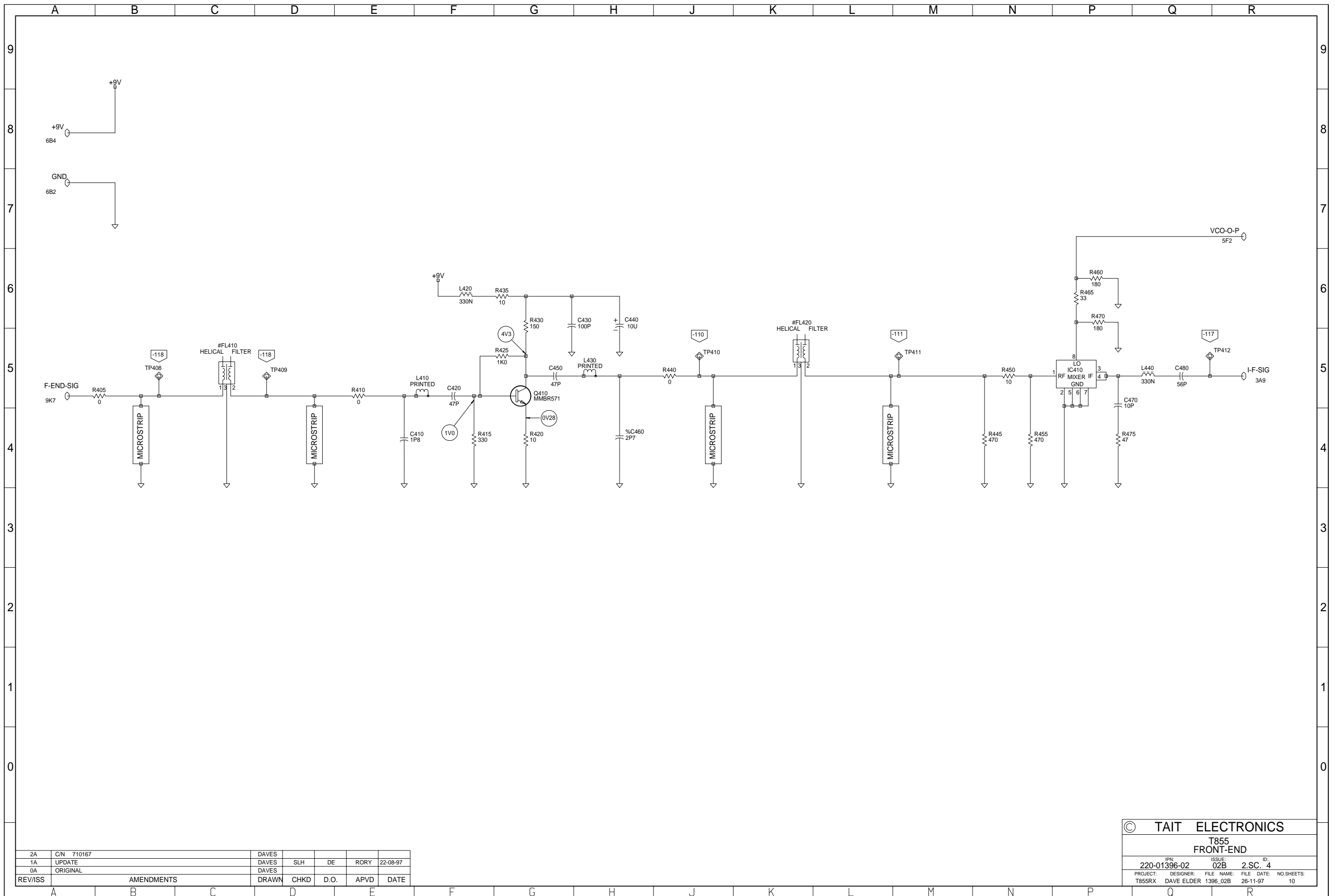


VARIANT COMPONENTS					
&C318	&C324	&C336	&R344	&XF300A	&XF301
&C320	&C326	&C338		&XF300B	&XF302
&C322	&C334	&C340			

Refer to the parts list for the values for each product type.

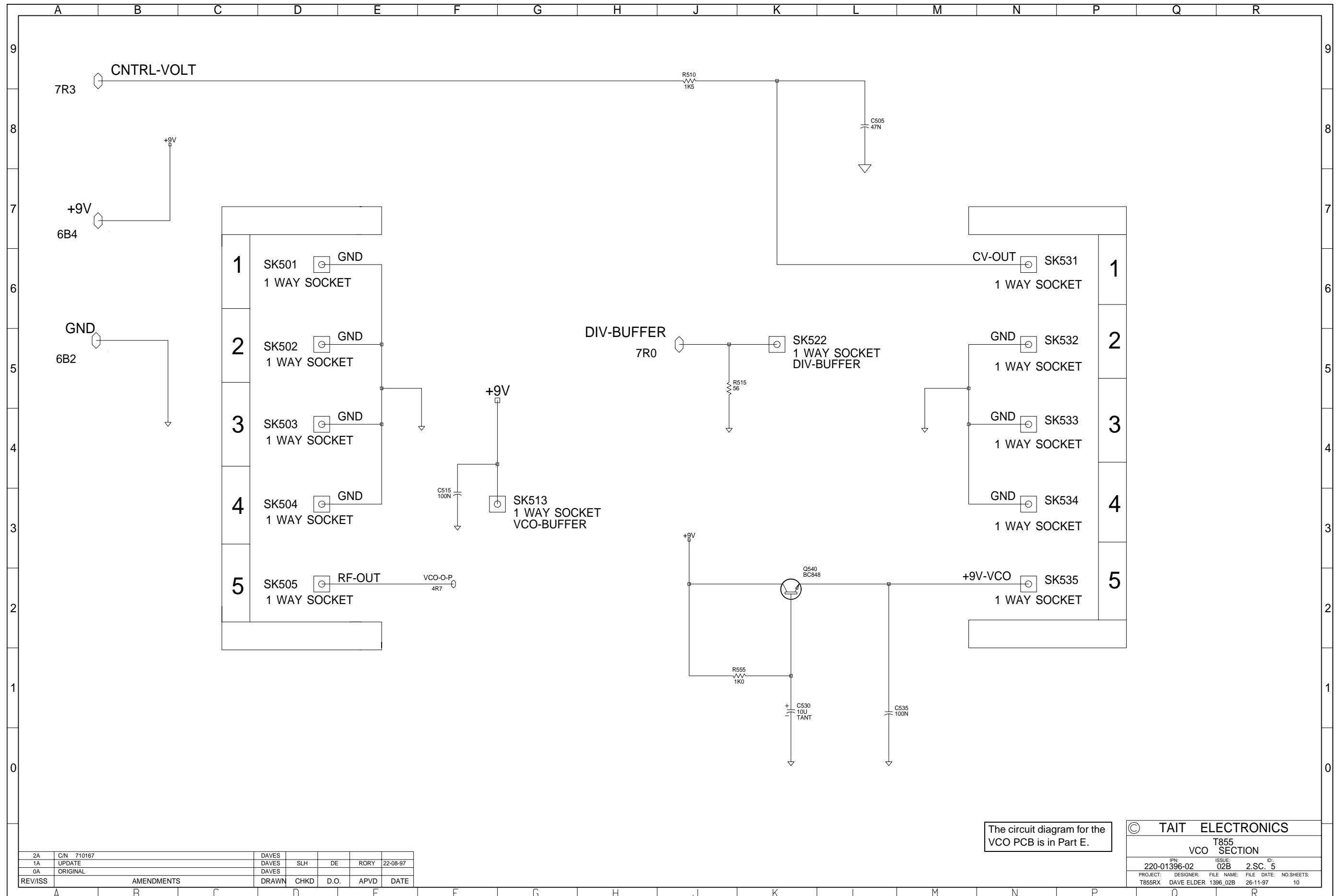
REV/ISS	AMENDMENTS	DRAWN	CHKD	D.O.	APVD	DATE
2B	CORRECTED VALUES OF &C320 ETC	DAVEE				26-11-97
2A	C/N 710167	DAVES	SLH	DE	RC	22-10-97
1A	UPDATE	DAVES	SLH	DE	RORY	22-08-97
0A	ORIGINAL	DAVES				

© TAIT ELECTRONICS			
T855 IF			
IPN:	ISSUE:	DESIGNER:	NO. SHEETS:
220-01396-02	02B	DAVE ELDER	10
PROJECT:	FILE NAME:	FILE DATE:	
T855RX	1396_02B	27-11-97	



2A	C/N 710167	DAVES				
1A	UPDATE	DAVES	SLH	DE	RORY	22-08-97
0A	ORIGINAL	DAVES				
REV/ISS	AMENDMENTS	DRAWN	CHKD	D.O.	APVD	DATE

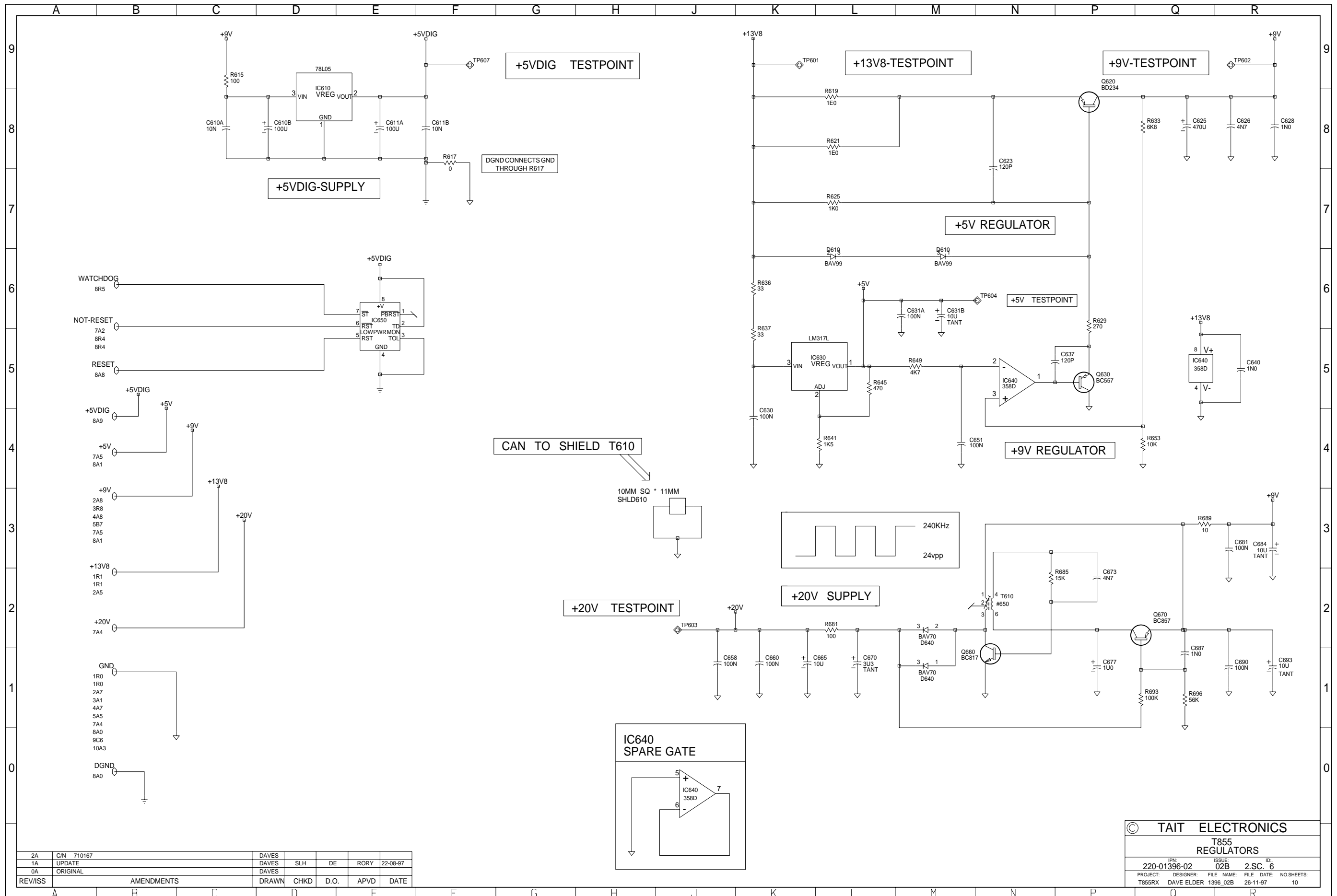
© TAIT ELECTRONICS			
T855 FRONT-END			
IPN	ISSUE	ID	
220-01396-02	02B	2.SC. 4	
PROJECT:	DESIGNER:	FILE NAME:	FILE DATE:
T855RX	DAVE ELDER	1396_02B	26-11-97
			NO. SHEETS: 10



2A	C/N	710167	DAVES				
1A	UPDATE		DAVES	SLH	DE	RORY	22-08-97
0A	ORIGINAL		DAVES				
REV/ISS	AMENDMENTS		DRAWN	CHKD	D.O.	APVD	DATE

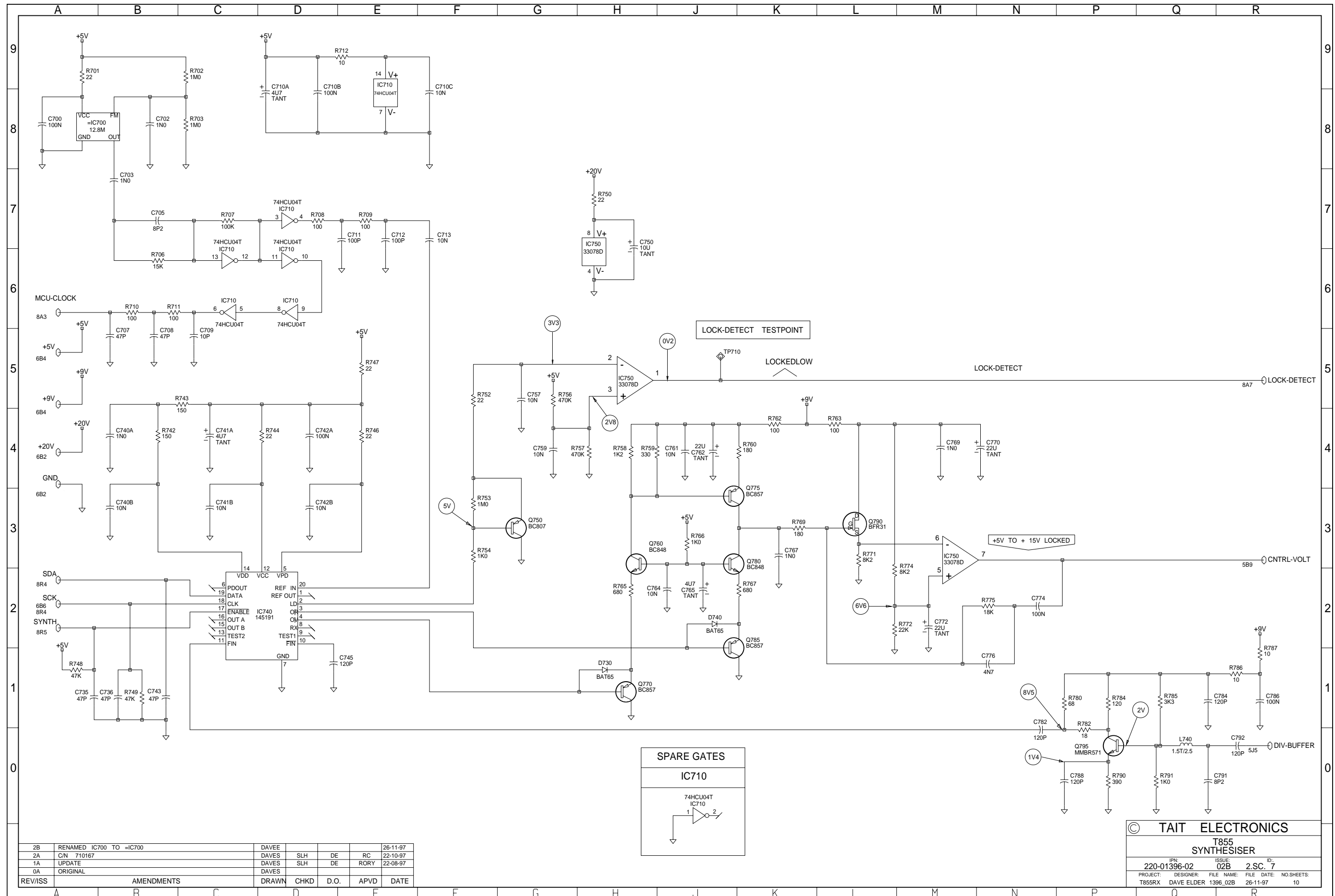
The circuit diagram for the VCO PCB is in Part E.

© TAIT ELECTRONICS			
T855 SECTION			
IPN:	ISSUE:	FILE NAME:	ID:
220-01396-02	02B	1396_02B	2.S.C. 5
PROJECT:	DESIGNER:	FILE DATE:	NO.SHEETS:
T855RX	DAVE ELDER	20-11-97	10



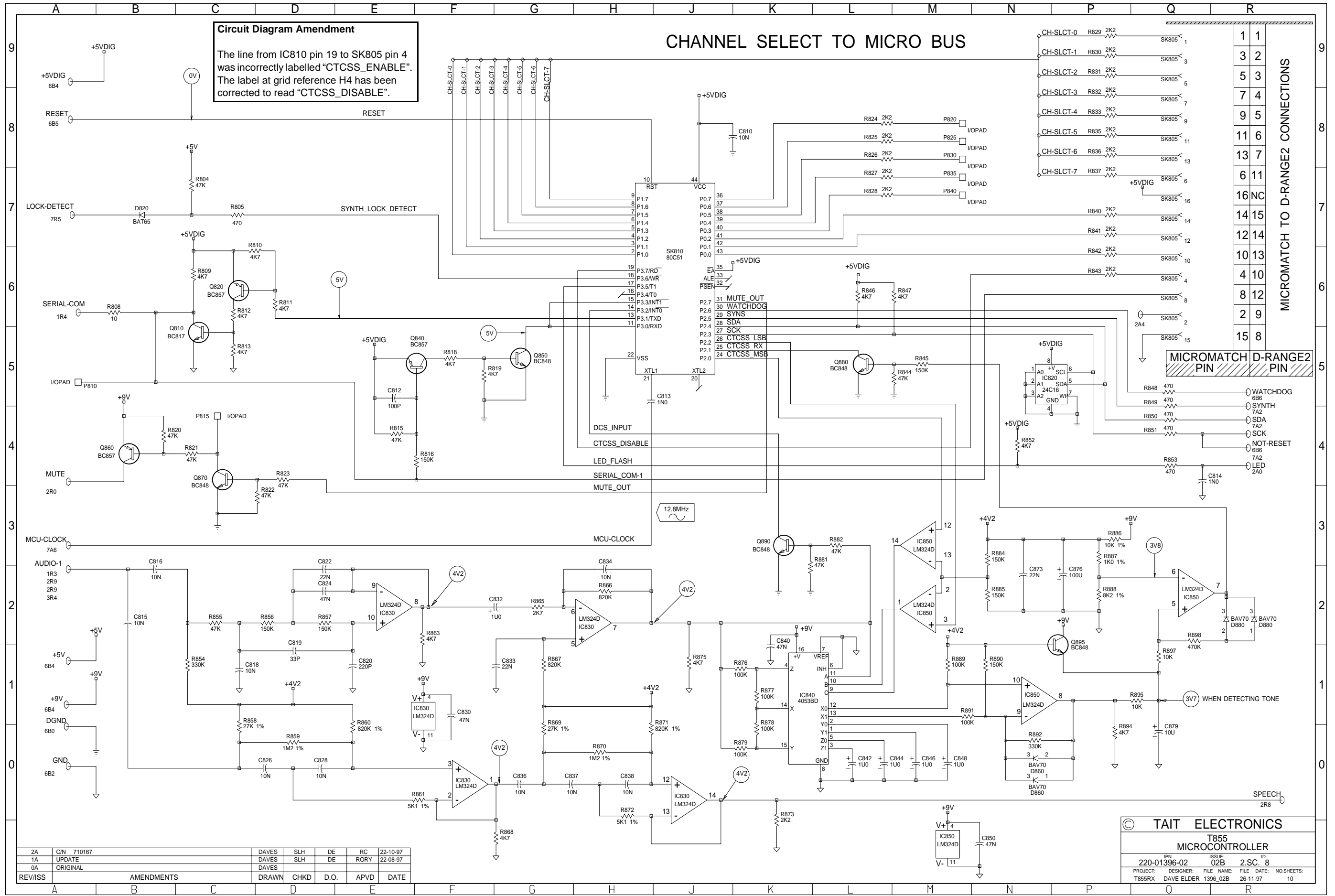
2A	C/N	710167	DAVES				
1A	UPDATE		DAVES	SLH	DE	RORY	22-08-97
0A	ORIGINAL		DAVES				
REV/ISS	AMENDMENTS		DRAWN	CHKD	D.O.	APVD	DATE

© TAIT ELECTRONICS			
T855 REGULATORS			
IPN	ISSUE	FILE	ID
220-01396-02	02B	2.SC.	6
PROJECT:	DESIGNER:	FILE NAME:	FILE DATE:
T855RX	DAVE ELDER	1396_02B	26-11-97
			NO.SHEETS:
			10



2B	RENAMED IC700 TO =IC700	DAVEE			26-11-97
2A	C/N 710167	DAVES	SLH	RC	22-10-97
1A	UPDATE	DAVES	SLH	DE	RORY
0A	ORIGINAL	DAVES			
REV/ISS	AMENDMENTS	DRAWN	CHKD	D.O.	APVD
					DATE

© TAIT ELECTRONICS			
T855 SYNTHESISER			
IPN:	ISSUE:	DESIGNER:	FILE DATE:
220-01396-02	02B	DAVE ELDER	20-11-97
PROJECT:	DESIGNER:	FILE NAME:	FILE DATE:
T855RX	DAVE ELDER	1396_02B	20-11-97
			NO SHEETS:
			10



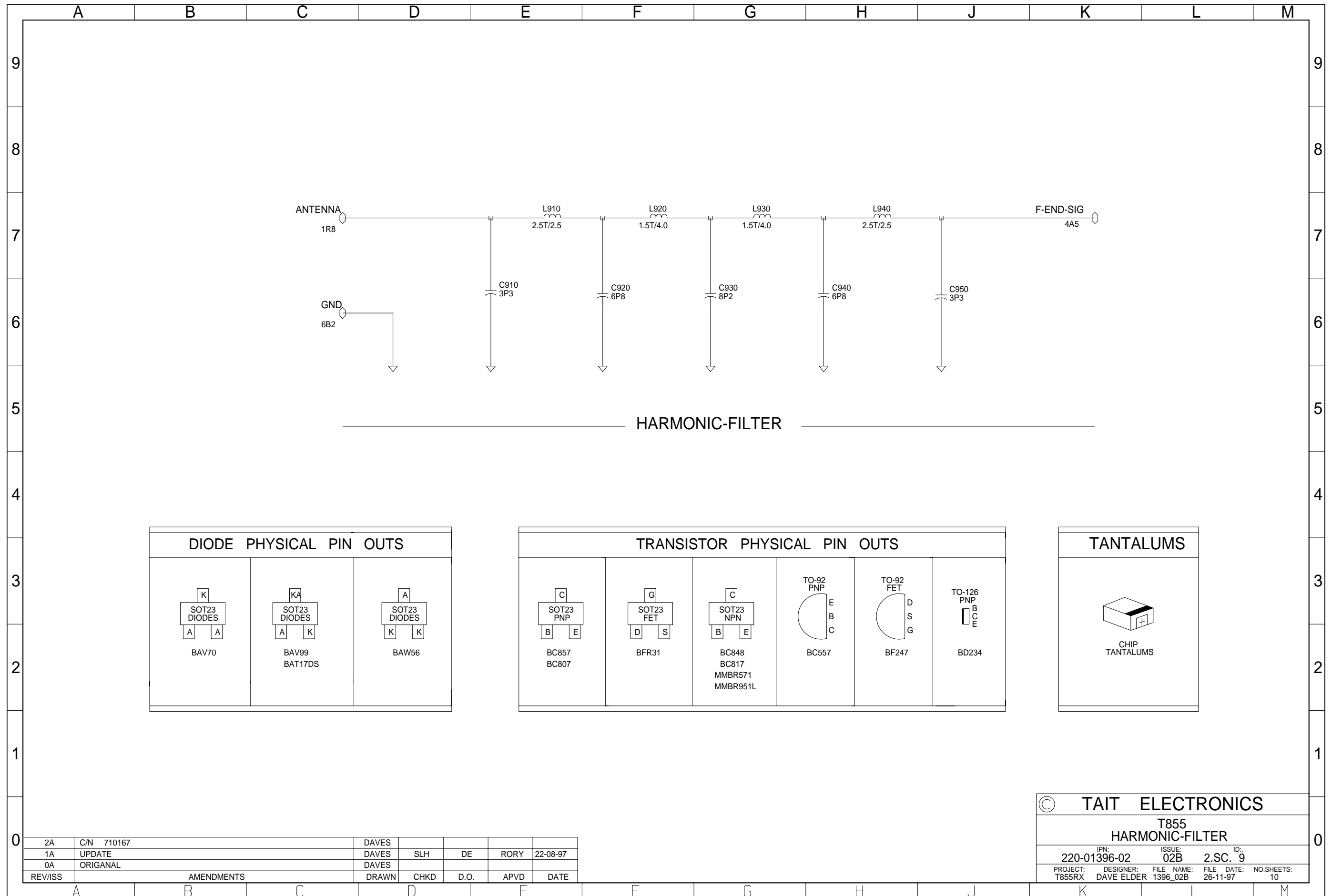
REV/ISS	AMENDMENTS	DRAWN	CHKD	D.O.	APVD	DATE
2A	C/N 710167	DAVES	SLH	DE	RC	22-10-97
1A	UPDATE	DAVES	SLH	DE	RORY	22-08-97
0A	ORIGINAL	DAVES				

© TAIT ELECTRONICS

T855 MICROCONTROLLER

IPN: 220-01396-02 ISSUE: 02B ID: 2.S.C. 8

PROJECT: T855RX DESIGNER: DAVE ELDER FILE NAME: 1396_02B FILE DATE: 26-11-97 NO.SHEETS: 10



2A	C/N 710167	DAVES				
1A	UPDATE	DAVES	SLH	DE	RORY	22-08-97
0A	ORIGANAL	DAVES				
REV/ISS	AMENDMENTS	DRAWN	CHKD	D.O.	APVD	DATE

© TAIT ELECTRONICS					
T855 HARMONIC-FILTER					
IPN:	220-01396-02	ISSUE:	02B	ID.:	2.SC. 9
PROJECT:	T855RX	DESIGNER:	DAVE ELDER	FILE NAME:	1396_02B
		FILE DATE:	26-11-97	NO.SHEETS:	10

